



M970D ACCESSORIES

STANDARD ACCESSORIES



Gigabit Ethernet Adapter Cable
Winmate Part Number:94I0080300K1

- For LAN from 30 pin extension port
- Length:10cm
- Connector: RJ45, female
- Gigabit Ethernet

 [datasheet](#)



Rubber Feet
Winmate Part Number:88097T201C00


- Reduce the M970D's back surface temp.
- Height: 8mm


OPTIONAL ACCESSORIES



HDMI Adapter Cable
Winmate Part Number:94E0190300K0


- For HDMI output from 30 pin extension port
- Length:10cm
- HDMI connector: Type A, female


 [datasheet](#)



Hand-Strap
Model Name:M97SP-V1
Winmate Part Number:98K000A0001K


The ergonomic hand-strap can help you handle the Rugged Tablet PC much more easily and comfortable.

 [M97SP-V1](#)



Desk Dock
Model Name:DCK97-V2
Winmate Part Number:98K000A00021
(Optional VGA out support Windows7 only)

- 12V DC-in for Charging
- USB 2.0 x 2
- VGA Output max to 1024 x 768
- LAN x 1 10/100Mb


 [DCK97-V2](#)



Vehicle Dock
Model Name:VD-M970D
Winmate Part Number:98KT00A00004


- Hold the Tablet tightly on the moving vehicle
- Support both terminal block & 2.5ψpower jack input
- 9~36V DC-in wide range DC input
- IP52 design (Rain prove)


 [VD-M970D](#)



Charging Cart
Model Name:M97CC-V2
Winmate Part Number:98KT00A00003

- Charge max. up to 32 pcs of tablet PC at the same time
- Lockable doors and casters design for security and safety

 [M97CC-V2](#)



Vehicle Charger
Winmate Part Number:MOQ by Request

- Rapidly charges your M970D tablet PC in your car while you drive
- Length: 3m



Capacitive Touch Stylus

Winmate Part Number:9B0000000326

For capacitive touch

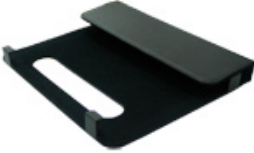


VESA Mounting Kit

Model Name:M97VS-V1
Winmate Part Number:98K000A0001N

VESA 75 x 75 mm screw hole

 [VESA Mounting Kit](#)



Holster

Model Name:M97HS-V1
Winmate Part Number:9B0000000314

Holster for M970 series use

 [M97HS-V1](#)



Mobile Power Station

Model Name:M44BW-100
Winmate Part Number:9A0000000001

- Model Name: M44BW-100
- 5V / 12V / 19V DC Output
- Capacity: 8000mAh

 [M44BW-100](#)

Mobile Printer

Winmate Part Number:9B000000007B



- Model Name: MX20
- Print width: 1.89-inch(48mm)
- Drop & Fit label installation design
- IP54 water / dust resistant and 1.5M shock resistant
- Supports both wire (RS232 and USB ports)
- Long standby time up to 72 hours or 300 label cycles between charges

 [MX20](#)

Mobile Printer

Winmate Part Number:9B000000007A

- Model Name: MX30
- Print width: 2.8-inch(72mm)
- Supports multiple label width & types
- Drop & Fit label installation design
- Water and dust resistant meeting IP54 standard
- Versatile interfaces with both wire (RS232 and USB) & wireless (Bluetooth) connectivity


 [MX30](#)

Bluetooth Keyboard

Winmate Part Number:9A00000000231



Black style Bluetooth 3.0 Keyboard

 [Bluetooth keyboard](#)